

EN

YOUR **SPECIALISTS** FOR HIGH-PERFORMANCE  
ZIRCONIUM DIOXIDE AND CAD/CAM MATERIALS.



2024



MADE IN  
GERMANY

## Welcome to our world!

In addition to highly esthetic and high-performance zirconium dioxide, we also offer other CAD/CAM materials for a wide range of requirements.

*“Zirconium dioxide is our specialty, our passion. We are constantly expanding our range to be the go-to experts for CAD/CAM materials.”* Managing Director pritidenta® GmbH, David Figge

We specialize in zirconium dioxide, and we do it well. This is in no small part thanks to our internal Research & Development department and our in-house production facilities, both of which are located in Germany – and of course our fantastic team.

Whilst we are experts, we are always striving to improve in order to offer our customers solutions for every application. Our aim is to continuously expand our expertise in the field of CAD/CAM materials. For us, quality is the top priority.

This catalog is designed to provide you with a complete overview of our wide range of discs made of **zirconium dioxide and other CAD/CAM materials**.

There are also some useful accessories to help make your day-to-day work that little bit easier. pritidenta® has a range of intelligent solutions to assist you in your work, from shade-taking right through to insertion of the restoration. Mill your restorations from our **discs**, sinter and subsequently create an esthetically pleasing finish with the **priti®perfect** Stain and Structure set! This is quick, easy and allows you to achieve top-quality, professional results!

We have also put together some useful information for you about our production processes and our product portfolio....

... and now you can experience the creative interaction:

**artistic craftsmanship and design combined with digital processes!**

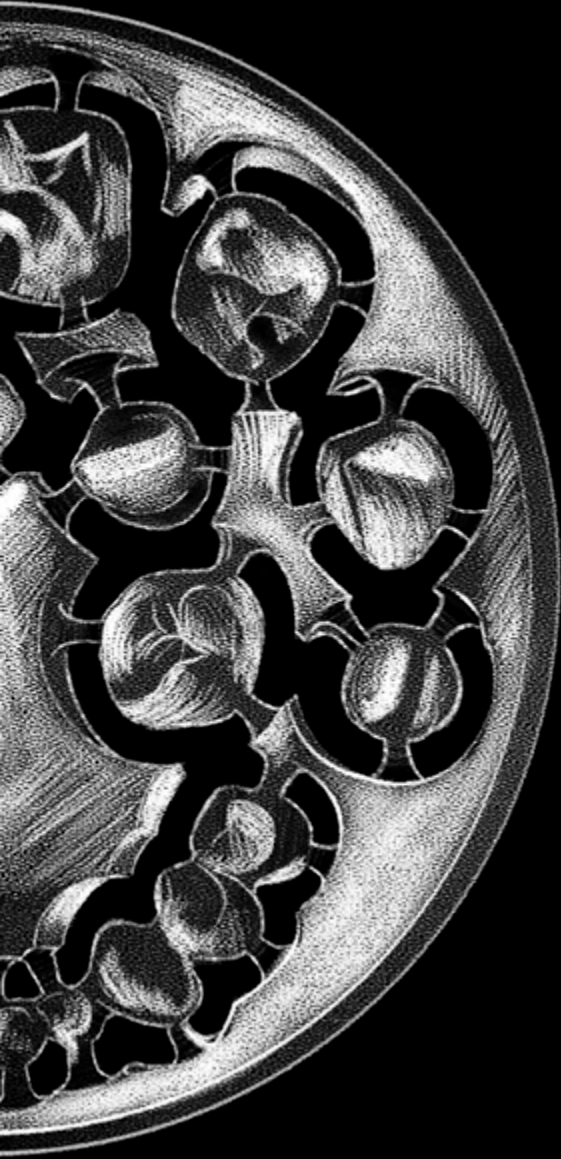
Thank you for your interest, and I hope you enjoy our catalog.

**David Figge**

Managing Director at pritidenta® GmbH

## Table of contents

04	This is how it works!
05	Manufacturing workflow
06	Our product series
07	Our product types
08	Areas of application
10	Multi Translucent overview
12	priti®multidisc ZrO <sub>2</sub> <b>Multi Translucent PLUS</b>
14	priti®multidisc ZrO <sub>2</sub> <b>Multi Translucent</b>
16	priti®multidisc ZrO <sub>2</sub> <b>High Translucent</b>
17	priti®multidisc ZrO <sub>2</sub> monochrome <b>Extra Translucent</b>
18	priti®multidisc ZrO <sub>2</sub> monochrome <b>Translucent</b>
19	priti®multidisc ZrO <sub>2</sub> monochrome <b>Opaque</b>
20	priti®perfect
26	CORiTEC® <b>splint basic</b>
27	CORiTEC® <b>splint comfort</b>
28	CORiTEC® <b>temp PMMA disc</b>
29	CORiTEC® <b>Titan Grad 5 Disc</b>
30	CORiTEC® <b>CoCr M6 disc</b>
31	CORiTEC® <b>CoCr W8 disc</b>



## This is how it works!

### priti®multidisc ZrO<sub>2</sub>

#### ZIRCONIUM DIOXIDE MATERIALS

- Can all be sintered together at 1,450°C/2,642°F
- Any programmable furnace designed for high-temperature sintering (up to 1,600°C/2,912°F) is suitable
- Rapid sintering (up to 3-unit bridges) is possible
- Highly compressed material ensures precise margins and edges
- Any stain and glaze material approved for zirconium dioxide can be used
- Zirconium dioxide Type II, Class 5 according to DIN EN ISO 6872
- CTE  $(10.5 \pm 0.5) \cdot 10^{-6} \cdot K^{-1}$
- Veneering is possible with any ceramic material that is compatible with the CTE  $(10.5 \pm 0.5) \cdot 10^{-6} \cdot K^{-1}$  of ZrO<sub>2</sub>

#### FULL AND PARTIAL VENEERING

All full and partial veneers (including cut-back) can be applied without any restrictions. The only thing to ensure is that the ceramic materials used are compatible with the CTE of zirconium dioxide.

#### priti®multidisc ZrO<sub>2</sub>

- Available with ledge, a diameter of 98.5 mm makes it suitable for all open milling machines
- Cross-batch shade fidelity and homogeneous disc coloring
- With minimum wall thicknesses of 0.4 mm in the anterior region and 0.6 mm in the posterior region, you are always on the safe side

#### FABRICATION

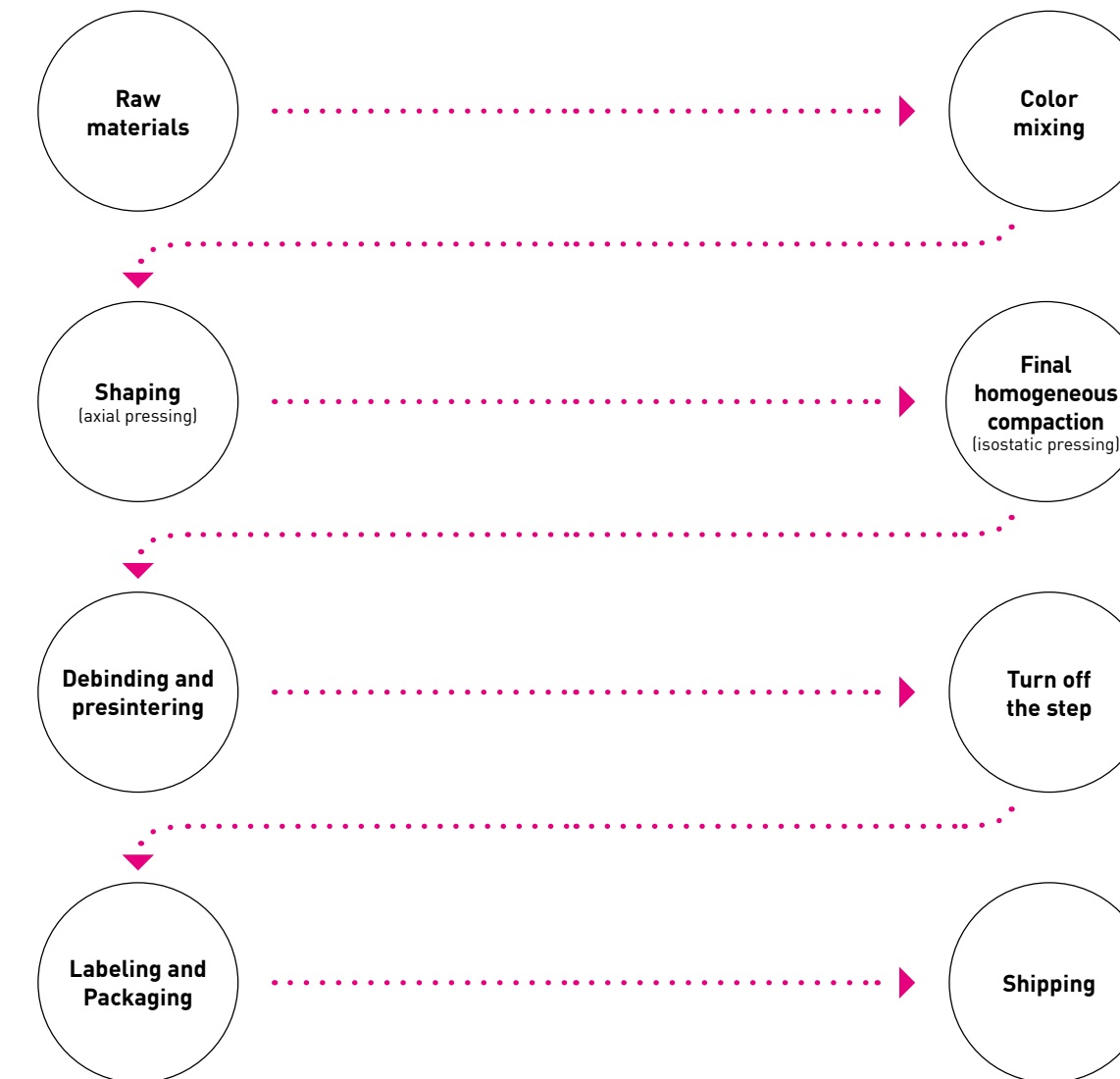
- Follows a validated process of uniaxial pressing followed by isostatic pressing
- Each individual pre-sintered blank is measured individually rather than batch by batch
- Specification of the defined sintering shrinkage to four decimal decimal digits

## Manufacturing workflow

### How are zirconium dioxide discs manufactured?

Manufactured in our in-house production facility.

MADE IN  
GERMANY



## Our quality promise

#### Every powder batch

- is measured
- is registered and traceable

#### Every firing is

- monitored
- logged and documented

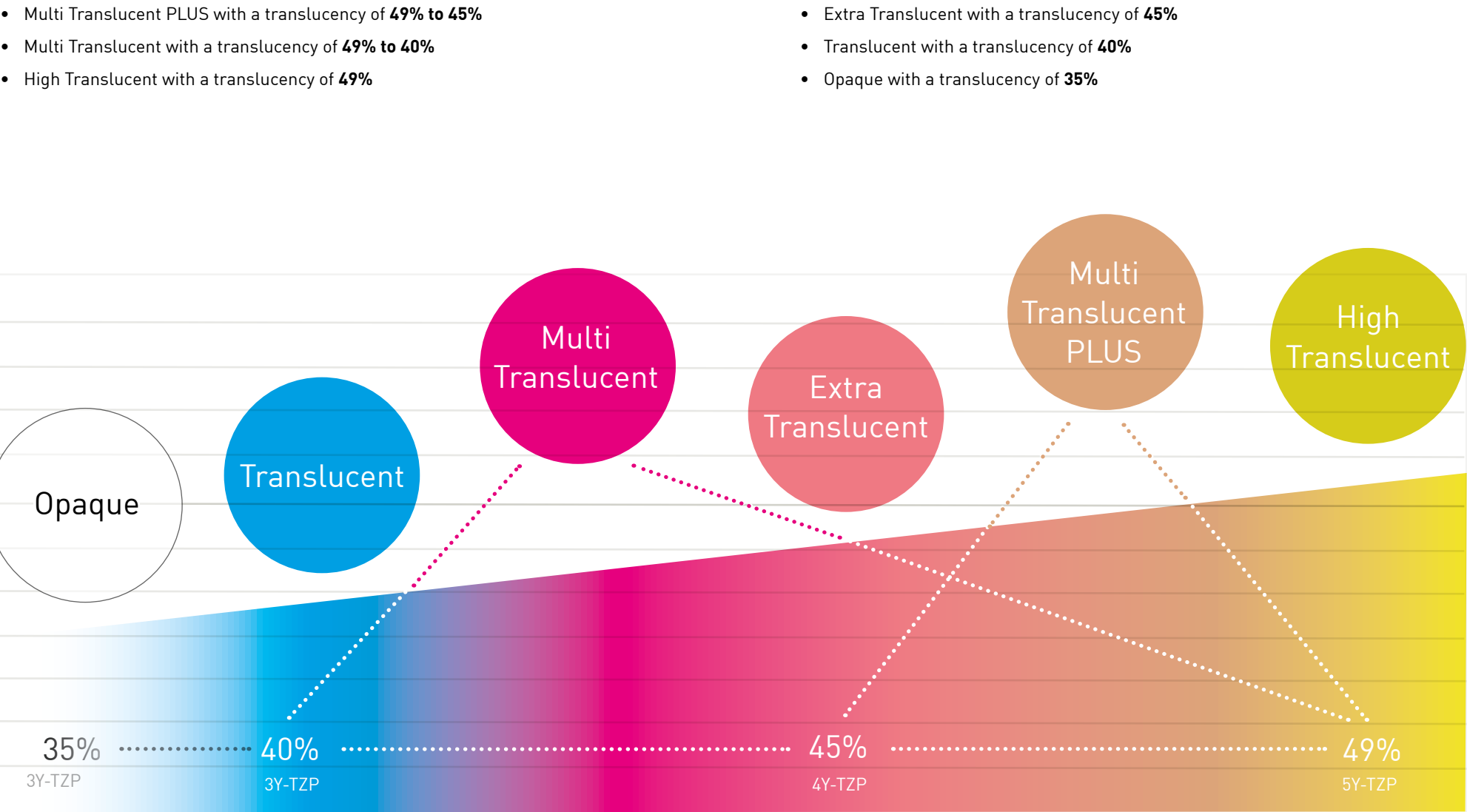
#### Every blank is

- measured
- checked for density
- measured and calculated for shrinkage
- registered and traceable





# Our six product series with graduated translucency



# Our product types

## Multi Translucent, Multilayer, Multicolor and Monochrome – An overview

In addition to different levels of translucency, pritidenta® offers four different product types.

### MULTI TRANSLUCENT

**Multi Translucent is suitable for nearly all areas of application.**  
In addition to a shade gradient, there is also a translucency gradient. The translucency gradient is made possible by combining 3Y-TZP or 4Y-TZP and the highly translucent 5Y-TZP.

### MULTILAYER COMPACT

NEW

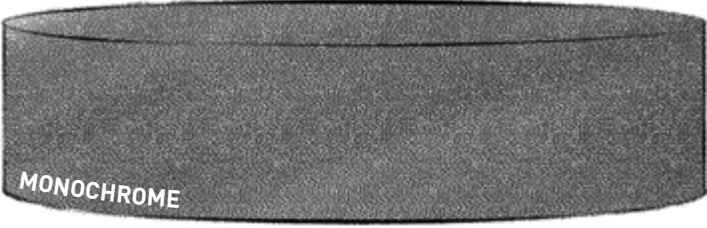
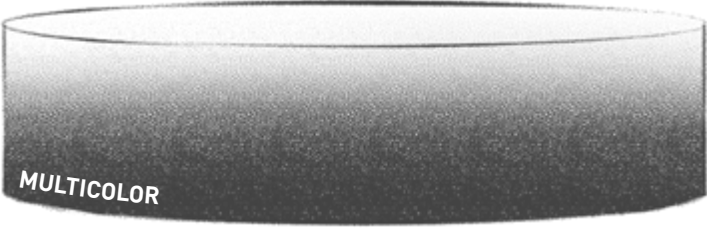
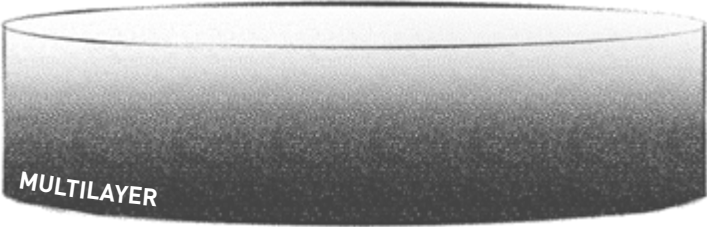
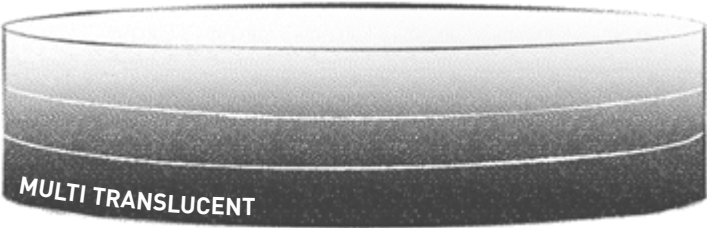
**The efficient solution for keeping your stock levels low.**  
We have developed a new shade system for our new Multilayer product and can guarantee perfect shade accuracy for the VITA® shade guide as well as an optimum shade gradient with only 8 blanks. In combination with a finishing system (e.g. priti®perfect) perfect results are achieved for every VITA® shade, including bleach shades.

### MULTICOLOR

**Proven and compact shade system for enthusiasts.**  
Multicolor is our proven and compact shade system with a shade gradient that is still very popular. The special multicolor shades have their own shade guide.

### MONOCHROME

**Proven standard system for frameworks.**  
Monochrome colored discs that are ideal for the manufacture of frameworks and can be used in combination with veneering ceramics to achieve great results.




# Suitable for every use

priti®multidisc ZrO<sub>2</sub> products for every application

## OUR SOPHISTICATED PRODUCT PORTFOLIO IS SUITABLE FOR MANY AREAS OF APPLICATION.

This overview shows you the applications of the different priti®multidisc ZrO<sub>2</sub> products.

- not recommended   + possible   ++ recommended   +++ highly recommended   ++++ top recommended

	Teeth and bonding				Fully anatomical					Cut-backs, copings and frameworks			
	Tooth shades	Discolored teeth and metal	Heavily discolored teeth	Luting with zinc phosphate cement	Inlays, onlays, veneers	Single crowns	Bridges up to 3 units	Bridges up to 14 units	Implant-supported superstructures up to 14 units	Individual copings	Bridge framework up to 3 units	Bridge framework up to 14 units	Rapid sintering 1 h
													
priti®multidisc ZrO <sub>2</sub> MT PLUS (4Y/5Y)	++++	++++	+	+	++++	++++	++++	++++	++++	+++	+++	+++	-
priti®multidisc ZrO <sub>2</sub> MT (3Y/5Y)	++++	++++	++	++	++	++++	++++	++++	++++	+++	+++	+++	-
priti®multidisc ZrO <sub>2</sub> ET MLC/MC (4Y)	++++	+++	+	+	+++	+++	+++	+++	+++	+++	+++	+++	++++
priti®multidisc ZrO <sub>2</sub> HT MLC/MC (5Y)	++++	-	-	-	++++	++++	++++	-	-	++	++	-	-
priti®multidisc ZrO <sub>2</sub> T mono (3Y)	++++	++++	++	++++	-	-	-	-	-	++++	++++	++++	-
priti®multidisc ZrO <sub>2</sub> O mono (3Y)	++++	++++	+++	++++	-	-	-	-	-	++++	++++	++++	-

## Profile – attractive and strong

### Our Multi Translucent **series**

#### THE NEW VERSATILITY

The new priti®multidisc ZrO<sub>2</sub> Multi Translucent series (MT series for short) is our latest product generation, and combines the positive translucency properties of 5Y-TZP in the enamel area with the positive strength and masking properties of 3Y-TZP or 4Y-TZP in the dentin area. This is the perfect combination of excellent esthetics and strength. The MT series is the ideal material to support you on your individual journey to esthetically pleasing and long-lasting dental restorations. Suitable for all indications and available in all 16 VITA® classical shades and also 3 bleach shades.

#### UNPARALLELED CHAMELEON EFFECT IN THE MOUTH!

The shades look great on the model, and are equally impressive in the mouth!

#### MAXIMUM RELIABILITY?!

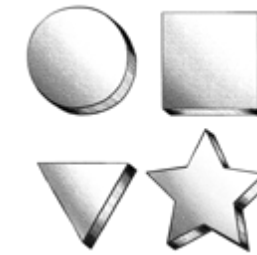
The clinical stability of the priti®multidisc ZrO<sub>2</sub> Multi Translucent series was successfully put to the test at the Department of Dental Prosthetics in Regensburg.



The detailed study can be found [here](#)

#### IT HAS EVERYTHING

- Unlimited range of use
- Excellent dental esthetics
- Variable definition of incisal section
- Maximum reliability
- Optimum masking of discolored substrates, such as titanium abutments
- Natural shade and translucency gradient
- All processing techniques possible: monolithic, cut-back and veneering
- Rapid sintering with a total time of approx 4 hours; approved for restorations with up to 3 units



#### Versatile indications

Highly esthetic, monolithic, fully anatomical crowns, partial crowns and bridges with up to 14 units, inlays, onlays, veneers and abutments as well as frameworks.



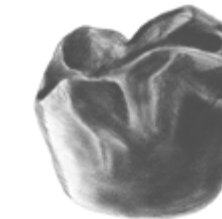
#### Strength & beauty

Compromise is a thing of the past. It's the end result that counts. A strength of >800 MPa across the whole blank plus positive study results (see p. 10) mean that larger restorations can also be implemented safely.



#### Which technique would you like?

You can choose between monolithic, cut-back and veneering techniques.



#### High-end esthetics

Top esthetics for fully or partially anatomical restorations.



#### Creative power

- Combines elegance with mechanical resilience
- Ideal for anterior restorations
- Impressive for all requirements

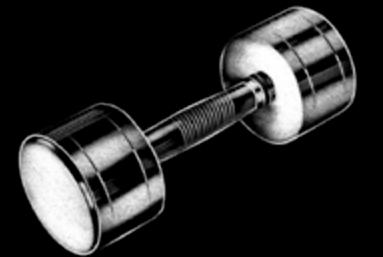


#### Satisfied patients

Don't compromise when it comes to the best result for the patient!

## Strength

>800 MPa



>1.150 MPa

## Translucency

>49%



40%

>49%



45%

# The esthetic choice for the highest standards

*priti®multidisc ZrO<sub>2</sub> Multi Translucent PLUS, 7-unit bridge,  
finished with priti®perfect, shade A2*



The esthetic choice – for the highest standards

## Multi Translucent **PLUS**

Translucency from 49% to 45%



### TOP ESTHETICS

**priti®multidisc ZrO<sub>2</sub> Multi Translucent PLUS** offers higher translucency values and finer layering (see graphic below) compared to Multi Translucent. The result is significantly enhanced shade gradient and esthetics.

### INDICATIONS

- Single crowns, inlays, onlays, veneers
- Bridges up to 14 units
- Fully anatomical crowns and bridges
- Primary telescope parts
- Implant-supported superstructures up to 14 units
- Cut-back possible

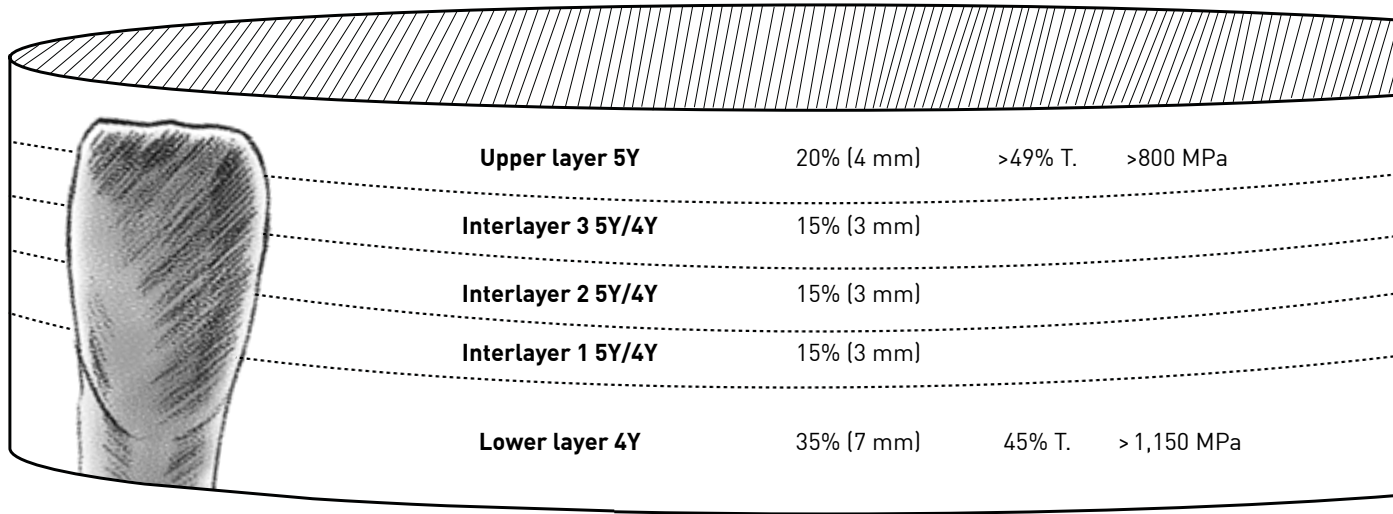
### MATERIAL

- Flexural strength: typical mean value  $\geq 1,100$  MPa
- High translucency from 49% to 45%
- Rapid sintering with a total time of approx 4 hours; approved for restorations with up to 3 units

### VERSIONS

- Available in all 16 VITA® classical shades and 3 bleach shades
- Available in 14, 16, 18, 20 and 25 mm heights

Multi Translucent **PLUS** – the “**one-for-all**” material. With the **best esthetic properties** and **high strength**.



*Disc height: 20 mm  
(Illustration does not correspond exactly to the stated height)*



# The sturdy choice for maximum strength

*priti®multidisc ZrO<sub>2</sub> Multi Translucent, 4-unit bridge,  
finished with priti®perfect, shade A2*



## The reliable choice – for maximum strength

### Multi Translucent

Translucency from 49% to 40%



### TOP STRENGTH

**priti®multidisc ZrO<sub>2</sub> Multi Translucent** offers outstanding strength with its special layering concept, which also achieves better masking of underlying teeth.

### INDICATIONS

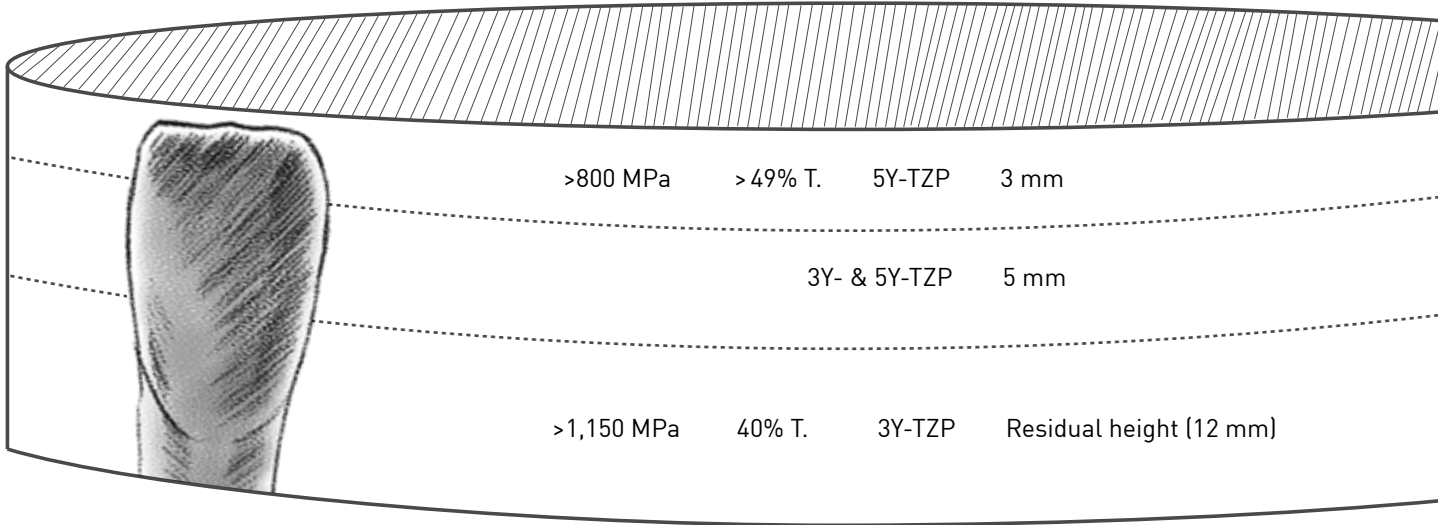
- Single crowns, inlays, onlays
- Bridges up to 14 units
- Fully anatomical crowns and bridges
- Primary telescope parts
- Implant-supported superstructures up to 14 units
- Cut-back possible
- Good coverage of discolored teeth

### MATERIAL

- Flexural strength: typical mean value  $\geq 1,100$  MPa
- Homogeneous coloring
- Consistently reproducible shades
- Rapid sintering with a total time of approx 4 hours; approved for restorations with up to 3 units

### VERSIONS

- Available in all 16 VITA® classical shades and 3 bleach shades
- Available in 16, 20 and 25 mm heights



*Disc height: 20 mm  
(Illustration does not correspond exactly to the stated height)*





*priti®multidisc ZrO<sub>2</sub> multicolor High Translucent, A 3-4, not stained or layered, glaze firing only*

## High Translucent

Translucency of 49%, flexural strength >650 MPa

HT

High Translucent is the material of choice for the best and most vibrant esthetics of restorations with up to 3 units. Its translucency is comparable to lithium disilicate.

The high translucency and integrated shade gradient make the material ideal for efficient fabrication of monolithic restorations.

### INDICATIONS

- Inlays
- Onlays
- Veneers
- Partial crowns
- Anatomically reduced and monolithic fully anatomical crowns and bridges (up to 3 units) for the anterior and posterior region

### OTHER ADVANTAGES

- High translucency of 49%
- Flexural strength >650 MPa
- Top esthetics

### TYPES

- Multilayer compact
- Multicolor
- Monochrome white (available in 14, 18, 20, 25 mm heights)

### MULTILAYER COMPACT

Shades	Heights
A 1-3	14, 18, 20, 25 mm
A 3-4	14, 18, 20, 25 mm
B 1-2	14, 18, 20, 25 mm
B 3-4	14, 18, 20, 25 mm
C 1-2	14, 18, 20, 25 mm
C 3-4	14, 18, 20, 25 mm
D 2-4	14, 18, 20, 25 mm
OM 1-3	14, 18, 20, 25 mm

COMING  
SOON  
Q3/2024

### MULTICOLOR

Shades	Heights
A light	14, 18, 20, 25 mm
A dark	14, 18, 20, 25 mm
B light	14, 18, 20, 25 mm
B dark	14, 18, 20, 25 mm
C light	14, 18, 20, 25 mm
C dark	14, 18, 20, 25 mm
D light	14, 18, 20, 25 mm
priti®bleach	14, 18, 20, 25 mm

## Extra Translucent

Translucency of 45%, flexural strength >1,150 MPa

ET

The Extra Translucent product series is ideal for use in the posterior region, where it can be used for monolithic restorations. In the anterior region, we recommend the cut-back or microlayering method to achieve the most natural results.

The special feature of Extra Translucent lies in the balance between comparatively high translucency and flexural strength. Consequently, this versatile material is can be used for all indications.

### INDICATIONS

- Inlays
- Onlays
- Veneers
- Partial crowns
- Monolithic fully anatomical and partially or fully veneered crowns and bridges (up to 16 units)
- Individual structures for the anterior and posterior region on natural teeth and implants

### OTHER ADVANTAGES

- Good translucency of 45%
- Flexural strength >1,150 MPa
- Great versatility for all indications

### TYPES

- Multilayer compact
- Multicolor
- Monochrome white (available in 14, 18, 20, 25 mm heights)

### MULTILAYER COMPACT

Shades	Heights
A 1-3	14, 18, 20, 25 mm
A 3-4	14, 18, 20, 25 mm
B 1-2	14, 18, 20, 25 mm
B 3-4	14, 18, 20, 25 mm
C 1-2	14, 18, 20, 25 mm
C 3-4	14, 18, 20, 25 mm
D 2-4	14, 18, 20, 25 mm
OM 1-3	14, 18, 20, 25 mm

COMING  
SOON  
Q3/2024

### MULTICOLOR

Shades	Heights
A light	14, 18, 20, 25 mm
A dark	14, 18, 20, 25 mm
B light	14, 18, 20, 25 mm
B dark	14, 18, 20, 25 mm
C light	14, 18, 20, 25 mm
C dark	14, 18, 20, 25 mm
D light	14, 18, 20, 25 mm
priti®bleach	14, 18, 20, 25 mm



*priti®multidisc ZrO<sub>2</sub> monochrome  
Extra Translucent in white, 14-unit bridge*



PRITI®TIP

No cracks or fractures  
in the restoration



Scan me




PRITI®TIP


The right CAD/CAM settings  
for your restoration:



Scan me




priti®multidisc ZrO<sub>2</sub> monochrome Translucent A3, 10-unit bridge



**PRITI®TIP**

Avoid flaking or chipping when fastening the disc:



Scan me

## Translucent

Translucency of 40%, flexural strength >1,150 MPa



The Translucent product series is the flexible choice for robust and initial partially or fully veneered restorations with up to 16 units.

### INDICATIONS

- Partial crowns
- Partially or fully veneered crowns and bridges (up to 16 units)
- Individual structures for the anterior and posterior region on natural abutments and implants

### OTHER ADVANTAGES

- Solid translucency of 40%
- Flexural strength >1,150 MPa
- Good masking properties

### TYPES

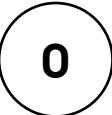
Monochrome

### MONOCHROME

Shades	Height
A1	14, 20, 25 mm
A2	14, 20, 25 mm
A3	14, 20, 25 mm
A3.5	14, 20, 25 mm
A4	14, 20, 25 mm
B1	14, 20, 25 mm
B2	14, 20, 25 mm
B3	14, 20, 25 mm
B4	14, 20, 25 mm
C1	14, 20, 25 mm
C2	14, 20, 25 mm
C3	14, 20, 25 mm
C4	14, 20, 25 mm
D2	14, 20, 25 mm
D3	14, 20, 25 mm
D4	14, 20, 25 mm
OM1	14, 20, 25 mm
OM2	14, 20, 25 mm
OM3	14, 20, 25 mm

## Opaque

Translucency of 35%, flexural strength >1,150 MPa



The low translucency provides a strong masking effect, which means the Opaque product series is ideal for veneering work on discolored teeth and metal structures.

### INDICATIONS

- Partially or fully veneered crowns and bridges (up to 16 units)
- Individual structures for the anterior and posterior region on natural teeth and implants

### OTHER ADVANTAGES

- Opaque translucency of 35%
- Flexural strength >1,150 MPa
- Ideal for veneering work on discolored teeth and metal structures

### TYPES


Monochrome

### MONOCHROME


Height	A1	A2	A3	A3.5	A4	B1	B2	B3	B4	C1	C2	C3	C4	D2	D3	D4	Weiß
10 mm	—	—	—	—	—	—	—	—	—	—	—	—	—	—	—	—	✓
12 mm	—	—	—	—	—	—	—	—	—	—	—	—	—	—	—	—	✓
14 mm	✓	✓	✓	✓	✓	—	✓	—	—	—	✓	—	—	✓	—	—	✓
16 mm	—	—	—	—	—	—	—	—	—	—	—	—	—	—	—	—	✓
18 mm	—	—	—	—	—	—	—	—	—	—	—	—	—	—	—	—	✓
20 mm	✓	✓	✓	✓	✓	—	✓	—	—	—	✓	—	—	✓	—	—	✓
25 mm	—	—	—	—	—	—	—	—	—	—	—	—	—	—	—	—	✓

✓ Item in stock

— Item available on request (from 300 pieces), approx. 6 weeks delivery time




priti®multidisc ZrO<sub>2</sub> monochrome Opaque A3, 4-unit bridge, reduced



**PRITI®TIP**

Furnace calibration with MTH PTC rings:



Scan me



# priti®perfect

The perfect complement for a vibrant surface finish  
...of teeth and gingiva

## THE PERFECT FINISH

prிடெந்தா has a range of intelligent solutions to assist you in your work, from shade taking right through to placement of the restoration. Milling, sintering and **esthetically finishing** teeth from prிடெந்தா multidisc. It's quick and easy, and gives top-quality results!

prிடெந்தா perfect puts the finishing touch to the existing prிடெந்தா concept.

**This is polished esthetic perfection!**

## APPROVED FOR:

- Zirconium dioxide
- Zirconium layering ceramics
- Metal layering ceramics
- Lithium disilicate

All prிடெந்தா perfect pastes are **fluorescent**

## prிடெந்தா perfect STANDS FOR:

Control your results perfectly with brush application and ready-to-use paste materials. The final colors are already evident during application.

With only **20 components** in the prிடெந்தா perfect set it is possible to achieve perfect results in just 1 firing. Depending on the case, the **2 firing solution** or internal staining can also be selected.

## prிடெந்தா perfect pink:

**5 structure pastes** and **3 stains** for pink esthetics.



# Product overview

These pastes are included in the sets



Basic Set											
Full Set	Paste	shade A	shade B	shade C	shade D	liquid	structure clear	white	transpa-pigeon	glaze	
	Contents	3 g	3 g	3 g	3 g	25 ml	3 g	3 g	3 g	3 g	
	Effect Set										
	Paste	rose	yellow	fissure	transpa-smoke	halo	structure opal	black	copper	transpa-blue	transpa-orange
	Contents	3 g	3 g	2 g	3 g	3 g	3 g	3 g	3 g	3 g	3 g

Pink Set									
Paste	structure blush	structure soft pink	structure neutral	structure pale pink	structure red	color dark red	color vanilla	color blue grey	liquid
Contents	5 g	5 g	5 g	5 g	5 g	2 g	2 g	2 g	25 ml

## priti®perfect paste overview:

The pastes and their uses

### STAINING PASTES

#### Controlling the basic shade



#### Imitating effects



#### Creating depth



#### Finish and base



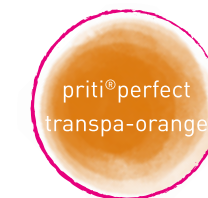
All priti®perfect pastes  
are **fluorescent**

## priti®perfect paste overview:

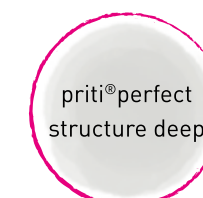
The pastes and their uses

### STRUCTURE PASTES

#### Imitating enamel



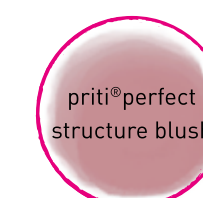
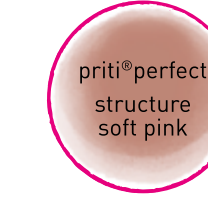
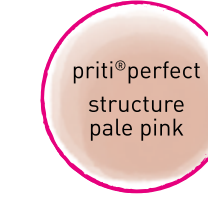
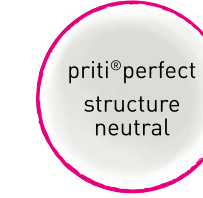
#### Imitating enamel/ Brightening the shade



#### Creating a halo effect



#### Structure pastes



#### Stains



+ Refresh  
the pastes  
with the liquid.





## Accessories for zirconium dioxide

### priti®pearl sintering beads, priti®clean cleaning powder



*priti®pearl sintering beads* 2.0 mm diameter

#### SMOOTH, PURE, EFFECTIVE

**priti®pearl sintering beads** are the ideal support when firing all-ceramic restorations.

With priti®pearl sintering beads, you can ensure safe and effective positioning of all-ceramic frameworks in the furnace.

The smooth, round shape of the beads means there is no jamming, especially during sintering shrinkage of zirconium dioxide, and this helps to prevent distorted sintering results.

- For sintering temperatures up to 1,600°C/2,912°F
- 2.0 mm diameter
- Contents 200 g



*priti®clean cleaning powder* 200 g

#### CLEANS, PROTECTS, PRESERVES

**priti®clean cleaning powder** guarantees ultra-clean sintering furnaces as a prerequisite for consistent shade results for your restorations.

priti®clean helps you keep the furnace chamber permanently clean. Simply add the powder to the firing chamber and perform standard sintering to bind residues of foreign materials into the powder.

If the furnace has been contaminated with coloring liquids, a cleaning firing is particularly important before sintering a pre-colored material for the first time. This avoids nasty surprises and allows the zirconium dioxide's optical properties to develop reliably.

Contamination of the furnace by foreign materials can lead to unpredictable changes in translucency and shade, often with green and yellow discoloration. This is also the case when sintering together with other materials, especially if they have been colored manually.

For reliably accurate sintering results, regular cleaning and replacement of contaminated sintering beads is recommended.

A positive side effect is that removing deposits from the furnace also increases the lifetime of the heating elements.

- Clean and shade-consistent sintering results
- No green or yellow discoloration of the restorations
- Prolongs the lifetime of the heating elements
- No new deposits
- Contents 200 g

## Accessories for zirconium dioxide

### priti®bowl sintering tray, PTC rings, MTH type

#### HIGHLY POROUS, DURABLE, FLEXIBLE

**priti®bowl sintering tray** is the right sintering tray for up to 1,000 standard and rapid sintering processes.

The priti®bowl is a durable basic product for high temperature applications up to 1,550°C/2822°F.

The crucible is made of aluminum oxide, and the high porosity of the material makes it highly resistant to thermal shock.

Up to 1,000 firing cycles are possible, including rapid sintering processes. There are two diameters to choose from: 98 mm and 118 mm.

- For up to 1,000 firing cycles
- Suitable for rapid sintering
- Available in two diameters Ø 98 mm, Ø 118 mm

#### PRECISE, RELIABLE AND SUPER-SIMPLE

A calibrated sintering furnace that really is capable of reaching the temperature specified by the manufacturer is essential for getting the best out of zirconium dioxide: maximum strength and translucency combined with extremely natural shading.

The degree of shrinkage of the PTC rings indicates the actual furnace temperature, enabling you to detect and remedy any deviation from the programmed temperature.

**PTC rings of type MTH** are designed for applications in the temperature range of 1,340°C/2,444°F to 1,520°C/2,768°F, making them the perfect choice for dental sintering. PTC rings will take your sintering work to a whole new level in terms of reliability and reproducibility.

- For dental sintering programs with a maximum temperature of 1,340°C to 1,520°C
- Simple handling for optimal sintering results
- Affordable process reliability for your sintering work



*priti®bowl*

98 mm diameter

118 mm diameter



*PTCR MTH*

15 rings



# CORiTEC splint basic

The all-rounder – good & inexpensive!

## DOES A GREAT JOB

- **Extremely strong:** One of the most robust splints with **>150 MPa flexural strength**
- **Biocompatible:** Benzoyl peroxide-free, residual monomer content <1%
- **Crystal clear:** Ideal for occlusal splints and drilling templates
- **Burns residue-free:** Perfect for lost molds for the casting technique
- **Very good machinability** when milling and polishing
- Available in **16** and **20 mm** heights

## INDICATIONS

- Occlusal splints
- Bite templates
- Bleaching splints
- Drilling templates
- Functional and impression trays
- Lost molds for the casting technique in dental prosthetics



[Read more](#)  
Further details  
and ordering information

# CORiTEC splint comfort

Wearing comfort **redefined**

## THE KEY IS FLEXIBILITY

In contrast to conventional splint materials:

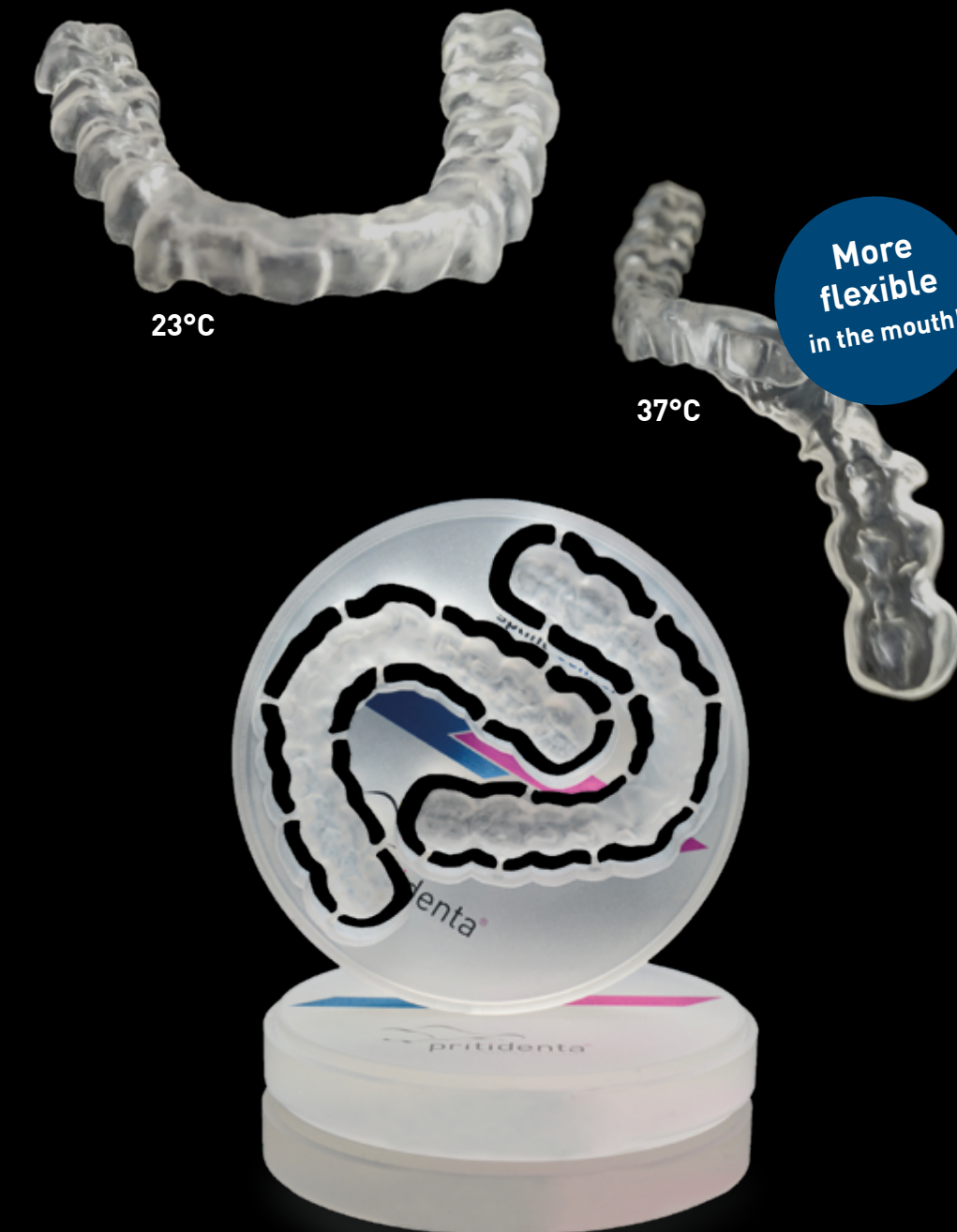
- **Thermo effect** – CORiTEC splint comfort adapts reversibly to the individual situation in the mouth
- **Pressure-free wearing comfort** – The material becomes significantly more flexible and comfortable at mouth temperature
- **Extreme resistance** – Highly durable, no yellowing and no plaque, even after long use
- **Cushioning properties** – Particularly comfortable for bruxism patients
- **Extremely biocompatible** – No BPO (dibenzoyl peroxide) like similar products
- **You forget that you're wearing a splint** – **every day!**

## INDICATIONS

- Reflex splints
- Stabilizing splints
- Positioning splints
- Therapeutic splints



[Read more](#)  
Further details  
and ordering information





# CORiTEC temp PMMA disc

A strong temporary – **Esthetic and strong.**

## PROVISIONAL & PRACTICAL – PERFECT!

- **Long-term temporary restorations** that **can be worn for up to 3 years!**
- Accurate shade matching to the pridenta shades and the VITA® classical shades\*
- **Very good milling and polishing properties**
- **Flexural strength:** >96 MPa
- **Biocompatible:** High degree of polymerization with patented, industrial process
- Available in 16 and 20 mm heights

*\*Available shades: A1, A2, A3, A3.5, A4, B2, C2, D3.*

## INDICATIONS

- Long-term temporary crown and bridge restorations (up to three years) in the anterior and posterior region with up to two pontics
- Splints for therapeutic restorations for treatment of temporomandibular joint problems and functional diagnostics
- Provisional anterior veneers for esthetic shape corrections

### CORiTEC gum PMMA disc

- Denture bases and gingiva replacement
- Available in 25 mm height



**Read more**

Further details  
and ordering information

# CORiTEC Titan Grad 5 Disc

Our milling blank made of **titanium**

## OUTSTANDING MILLING PROPERTIES AND BIOCOMPATIBILITY

- Ideal mechanical properties
- Excellent bonding with titanium ceramics
- Biocompatible
- Extremely corrosion-resistant
- Low thermal conductivity for greater patient comfort
- Available in 10, 12, 15, 18, 20 and 25 mm heights

## INDICATIONS

- Implant-supported dental restorations
- Superstructures
- Bar and combination work



**Read more**

Further details  
and ordering information





# CORiTEC CoCr M6 disc

Brilliant properties

## A SOLID BASIS FOR YOUR RESTORATIONS

- Ideal for fabricating bars and metal frameworks for veneering with ceramic
- Good soldering properties of the material allow existing work to be extended.
- **Easy machinability** – This CoCr alloy with molybdenum guarantees good machinability when milling and polishing
- **Safe for health and corrosion-resistant** – No traces of beryllium or nickel means good biocompatibility
- Very good for veneering with metal-ceramics
- Available in 10, 12, 13.5, 15, 16 and 18 mm heights

## INDICATIONS

- Individual crowns can be veneered
- Bridges, including with small cross-sections
- Partial dentures and full-arch dentures
- Clasps, bars, fastenings
- Implant-supported superstructures



Read more

Further details  
and ordering information

# CORiTEC CoCr W8 Disc

Dazzling properties

## A SOLID BASIS FOR YOUR RESTORATIONS

- Ideal for fabricating bars and metal frameworks for veneering with ceramic
- Good soldering properties of the material allow existing work to be extended
- **Easy machinability** – This CoCr alloy with molybdenum guarantees good machinability when milling and polishing
- **Safe for health and corrosion-resistant** – No traces of beryllium or nickel means good biocompatibility
- Very good for veneering with metal-ceramics
- Available in 10, 12, 13.5, 15, 16 and 18 mm heights

## INDICATIONS

- Crowns and bridges with up to 16 units
- Clasps, bars, fastenings
- Implant-supported superstructures



Read more

Further details  
and ordering information







pritidenta GmbH  
Meisenweg 37  
70771 Leinfelden-Echterdingen  
Germany

Phone +49 (0) 711 32 06 56 0

Fax +49 (0) 711 32 06 56 99

info@pritidenta.com  
[www.pritidenta.com](http://www.pritidenta.com)

**Member of imes-icore® Group**

©2024, pritidenta® GmbH, Germany. All rights reserved.  
pritidenta® and priti® are registered trademarks of pritidenta® GmbH, Germany.  
VITA® and VITA® shade designations are trademarks of VITA Zahnfabrik H. Rauter  
GmbH & Co. KG, Bad Säckingen, Germany. [REF 078 Rev 003 Date of printing 31.03.2024]